

10 BIGGEST RELATIONSHIP MISTAKES OF ALL TIME! • MEN'S SECRET FEARS • SPEED DATING: MEET YOUR MATCH IN A HURRY

TALK

Greenville

www.talkgreenville.com
FEBRUARY 2009

\$3.95

HIS & HERS:
It's All About Love!



TALK

HOME



HERE FOR A WHILE

When Phil Gregory started looking for a property in downtown Greenville, he already had a pretty good idea of what he was doing. After all, he was living in another condominium not far away when he got the opportunity to own one of the then unfinished units at Park Place on Main.

"I had purchased the other property as a temporary solution until I found something I liked. When the time came to move, I sold it with everything in it and started over here. Now I think I'll be here a while!"

Visiting Gregory in his 3,000 square foot home, we can see why it would be hard to leave. Each room has been custom designed to meet his needs and also to take advantage of the existing architecture there when the units were renovated.

"Barbara Dalton had helped me with design before and she decorated this place from the blueprints before it was built. I grew up in Greenville and remember downtown the way it was.

With Phil Gregory

Now I can walk out the door and enjoy the restaurants almost every night when I am in town-especially my favorite, Rick Erwin's!"

So as our downtown grows to be ever more a source of pride for us all, one man plans to be around to see it happen.

Right in the middle of everything.

written by
Kim Hassold

photographed by
Owen Riley



OPPOSITE: A view from the dining area to the keeping and living rooms shows the open floor plan of the unit.

RIGHT: Phil Gregory grew up in Greenville and takes great pride in the renovation of downtown.





See more home photos at www.talkgreenville.com.



ABOVE: The dining room is anchored by a table placed before a fireplace and under a custom chandelier.

OPPOSITE TOP: Fabrics were selected by Barbara Dalton in collaboration with Gregory, who requested earth tones throughout the home.

OPPOSITE BOTTOM: Fresh flowers and plants, along with a view of the downtown area, serve to bring the outdoors into the space.

OPPOSITE INSET: Looking from the dining area into the livingroom provides a view of the city.









See more home photos at www.talkgreenville.com.

OPPOSITE: Dalton divided the large living area into two “rooms” in order to accommodate smaller groups as well as the larger parties Gregory enjoys hosting. The “keeping room,” seen here, is at the back of the house and allows for natural light.

ABOVE: A view from the living area to the keeping room.

LEFT: Sitting in the keeping room, guests and family can easily enjoy the flow into the living area.

INSET: Collections of old books add a sense of history to the home.



ABOVE: An island makes an easy sitting area for a quick cup of coffee or an afternoon snack.

RIGHT: While Gregory admits to “not being much of a cook”, the kitchen is ready to accommodate anyone who wants to whip up a meal there. The commercial grade appliances, wine coolers and beautiful cabinetry are a part of each of the units in the building.

INSET: Looking from the kitchen to the dining room again demonstrates the open feeling of the space.

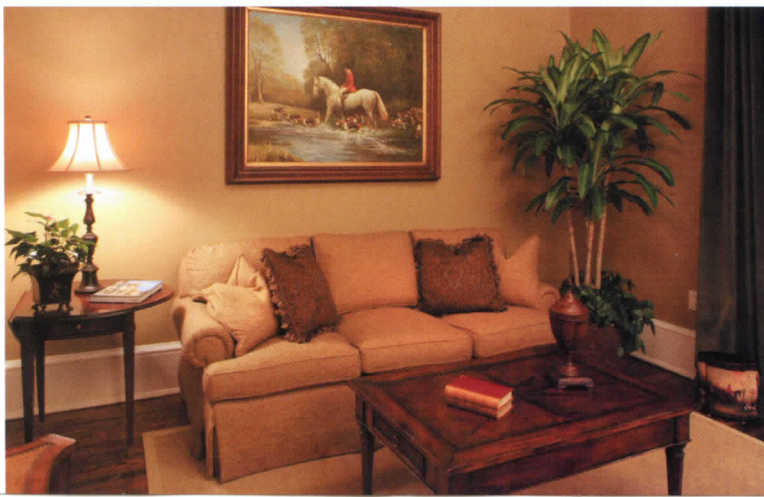
OPPOSITE TOP: A structural need necessitated the curved wall seen to the right here in the library. Dalton had the wall in that area painted with a faux finish that made it an asset.

OPPOSITE BOTTOM: The library is a quiet place to read and reflect. Cabinetry was custom built by Jose Florez.









OPPOSITE: The master bedroom is located at the front of the unit, just above an outside garden area with fountains, but well away from the bustle of Main Street.

ABOVE, TOP LEFT: The master bath is equipped with every luxury, including the free-standing tub seen here.

ABOVE, BOTTOM LEFT: An open door from the Master Suite shows the privacy available along with the access to outdoors.

ABOVE, RIGHT: A steam room is provided in all of the 7 units that make up Park Place on Main.

LEFT: The guest suite contains a couple of "windows" which actually do not open to the outside, but give the room a more expansive feel.

LEFT, BOTTOM: A sitting area in the guest suite provides privacy and a comfortable place to relax while in town.



See more home photos at www.talkgreenville.com.